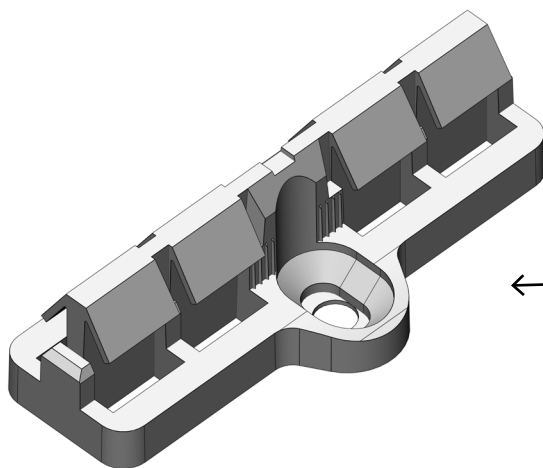
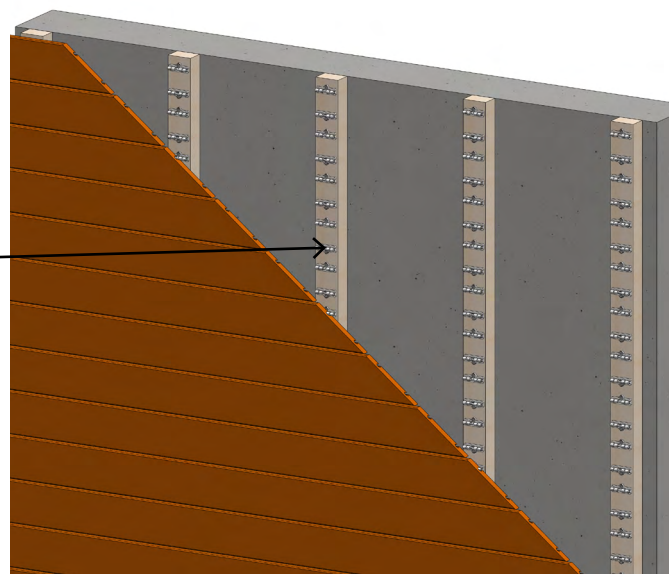


SOLO CLIP

Utilisation : For securing decking and cladding boards



SOLO CLIP

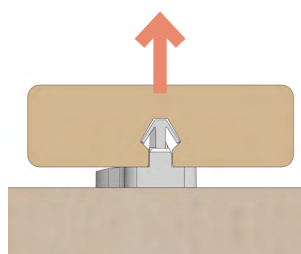


TECHNICAL CHARACTERISTICS

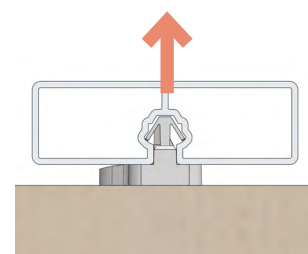
Material	Polyoxymethylene
Density (kg/m ³)	1410
Colour	Black
Tensile stress at yield (MPa)	64
Fusion temperature °C	190-220
Tensile modulus (MPa)	2850
Coefficient of linear expansion (10 ⁻⁶ /K)	110
Weight (g)	7.93

MECHANICAL PERFORMANCE

With 20x65 mm Thermo-pine board	
Average breaking force (N)	661
With aluminium board	
Average breaking force (N)	1120



The Thermo-pine board breaks at approx. 661 N



The Solo Clip breaks at approx. 1120 N

